

Alliance For Housing –
Oakland County’s Continuum of Care
2012 Annual State of Homelessness –
Supplemental Reports



June 2013

Contents

Point In Time/Housing Inventory Chart.....Page 3

Emergency Solutions GrantPage 6

Annual Homeless Assessment ReportPage 8

POINT IN TIME – 2013 Sheltered and Unsheltered Count

Each year HUD requires Continua of Care across the country to count the number of homeless persons staying in emergency shelters, transitional housing, or SAFE Havens. This “snapshot” is called the Point in Time (PIT) and takes place on one night during the last ten days of January. CoC’s are also required to count of number of unsheltered persons living in a place not meant for human habitation such as the street, a car, or an abandoned building biennially. In 2012 HUD changed the requirement that CoC’s the conduct the streetcount yearly beginning 2013.

In 2012, HUD updated the definition of homelessness and subsequently made changes to the way CoCs should capture and report the PIT data. In order to better capture household types, a new category was added to show households with only children (under 18) as well as the different age breakdowns to better understand the progress of youth between the ages of 18 to 24.

The major changes are as follows:

Population Data

During the PIT count, CoCs should collect information on the following household types:

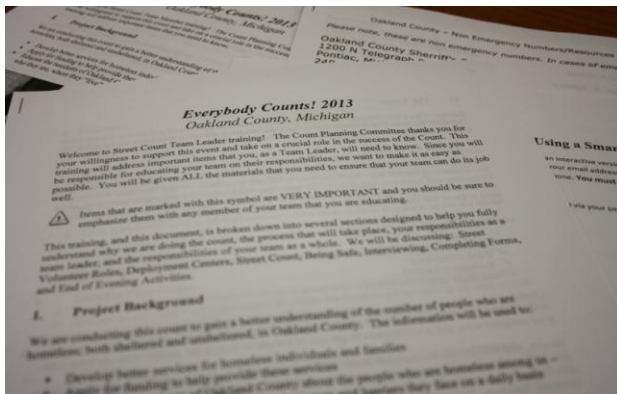
- **Persons in households with at least one adult and one child.** This category includes households with one adult and at least one child under the age of 18.
- **Persons in households without children.** This category includes single adults, adult couples with no children, and groups of adults.
- **Persons in households with only children.** This category includes persons under age 18, including unaccompanied children, adolescent parents and their children, adolescent siblings, or other household configurations composed only of children. CoCs are required to collect both the number of persons and the number of households for each household type

Housing Inventory Count (HIC) Guidance

- The HIC is a snapshot of a CoC’s housing inventory on a single night during the last ten days in January. It should reflect the number of beds and units available on the night designated for the count that are ***dedicated to serve persons who are homeless***. Beds and units included on the HIC are considered part of the CoC homeless system.
- Domiciliary Care for Homeless Veterans programs funded by the U.S. Department of Veterans Affairs (VA) should be categorized as Transitional Housing.

POINT IN TIME (cont'd)

Oakland County conducted the Point in Time (PIT) count on Wednesday, January 23, 2013 using the guidance provided by HUD as documented in “A guide to counting sheltered homeless”. The data was collected three ways. To capture the street count number, nearly 100 volunteers (from organizations and homeless ambassadors) canvassed mapped areas within the county and counted people on the street. Each volunteer received training on how to complete the data entry form through interviews and visual sightings. This year,



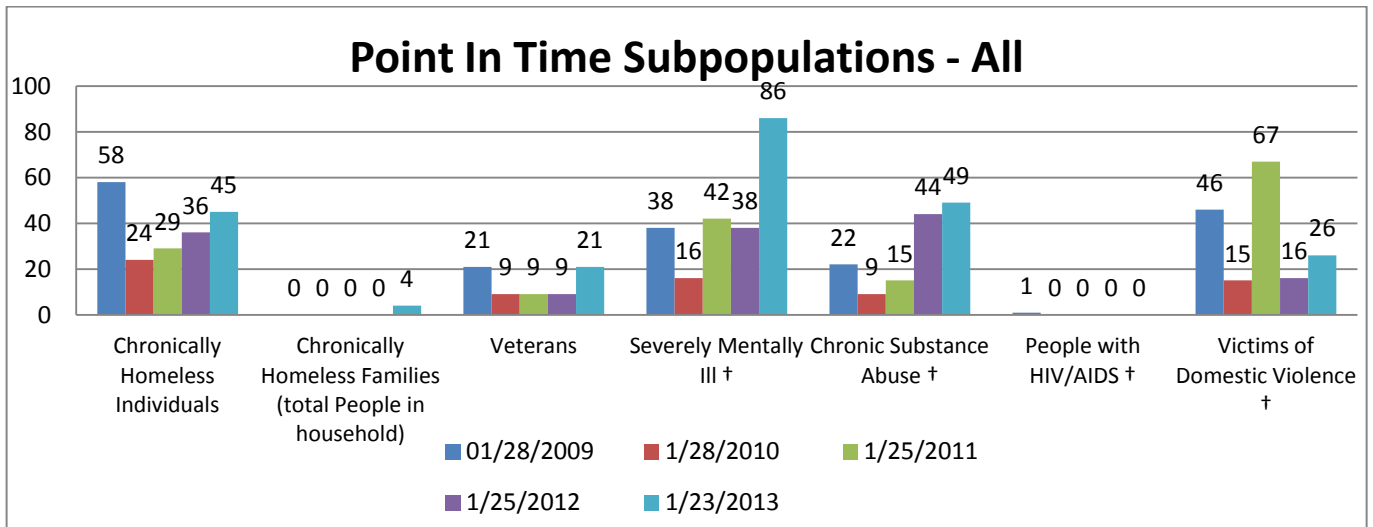
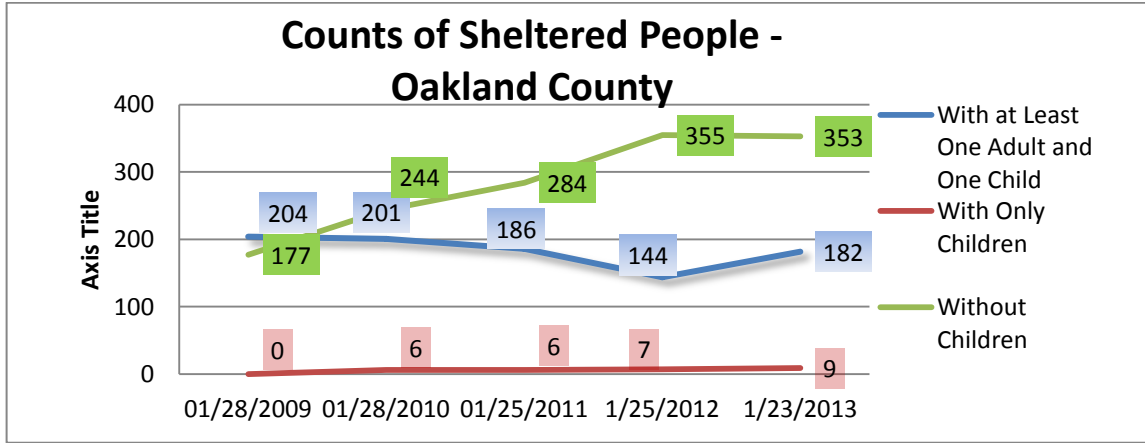
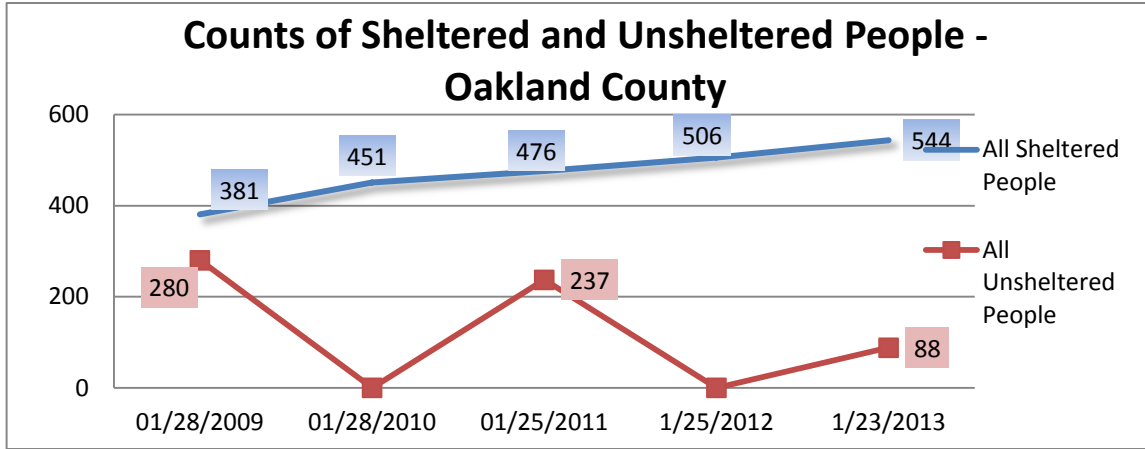
the mapping committee used technology to provide maps on cell phones of volunteers. Secondly, to capture the number of persons residing in shelters and transitional housing programs, HMIS participating agencies entered a service transaction for all persons receiving shelter services on the night of January 23rd, and finally, the organizations not participating in HMIS completed a data collection form provided to them and returned that form to the System Administrator so data could be used for the county wide count.

The organizations providing data:



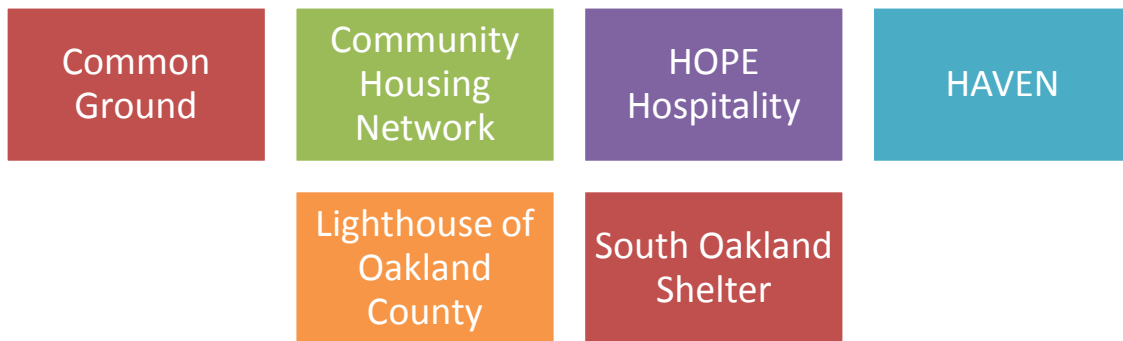
- On the night of January 23, 2013 there were 544 sheltered homeless persons in Oakland County (graph below).
- Our local shelters reported an increase of 9 persons from 2012. HOPE and SOCH had an increase in persons seeking shelter that night.
- Transitional Housing programs saw an increase in sheltered services of 9% from 2012.
- The number of sheltered families increased in 2013. There was an increase in families served in transitional housing programs.
- There were 88 persons counted for the unsheltered streetcount. This was a decrease in 149 persons from the 2011 street count number of 237.

POINT IN TIME (cont'd)



EMERGENCY SOLUTIONS GRANT (ESG)

- In support of the Campaign to End Homelessness in Michigan and incorporating the HEARTH Act regulations, MSHDA and Oakland County Government funded the Emergency Solutions Grant in 2012. The ESG sharing partners use the funds to:
 - foster better understanding and coordination for more efficient use of resources
 - rapidly re-house households, while continuing prevention activities, in order to:
 - prevent involuntary family separation (denying admission to family based on the age of any child under 18) and
 - stabilize individuals and families in their current housing or quickly move them into permanent housing.
- Street outreach teams are hard at work linking homeless persons on the street to affordable housing opportunities and with the services they need.
- The ESG partners include the following organizations:



- Table1 shows a large number of inquiries received from ESG partners (above) including the Housing Resource Center (HRC). All persons calling the HRC are screened for many programs including ESG, permanent supportive housing, and PATH.
- 1,555 persons received shelter, case management or rental assistance from an ESG partner. Of the 999 unduplicated households served, 78% were homeless.

Table 1 – Numbers Served

	MSHDA	Oakland County	Number served with ESG dollars
Total Inquiries Received	14,805	0	14,805
Total completed household screening assessments	1972	39	2,011
Total served with Security Deposit and utility arrears only	4	0	4
Total completed housing assessment (admitted)	1456	99	1,555
Total with housing plan (ongoing case management)	434	55	489
Total residing in shelter/hotel on exit	125	5	130
Total sustained housing w/out sheltering (on exit)	111	1	112
Total households (unduplicated)	999	54	1,053
Total homeless households served	775	45	820
Total prevention households served	238	10	248

EMERGENCY SOLUTIONS GRANT (ESG) (cont'd)

- Table 2 shows that 49% of households served exited to stable housing while 58% of those exited under 30 days. Engagement rate was over 90% for persons who exited with a known destination. Income and entitlement benefits for those that exited were below 50%.

Table 2 - Outcomes Performance for ESG Project

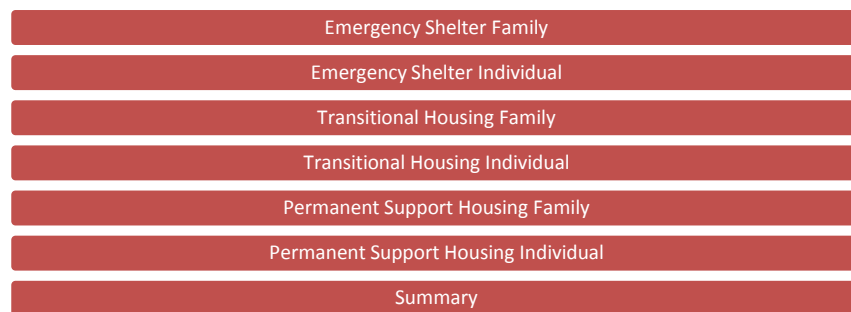
8	% Discharged to stable housing	49%
9	% Discharged to stable housing within 30 days	58%
10	% With “known” exit destinations (engagement)	93%
11	% Adults with earned Income/SSI/SSDI/TANF at exit	20%
12	% Adults with cash /noncash income at exit	40%
13	Has improved ratings on SS matrix in 3 target areas (income, employment and housing)	1.76 increase for 99% of those served
14	% found/sustained housing – Housing Plan	33%
15	Total number of ESG objectives where progress where need was identified and progress identified	6

ANNUAL HOMELESS ASSESSMENT REPORT (AHAR)

- The 8th Annual Homeless Assessment Report (AHAR) represents data on homelessness in the U.S. It responds to a congressional directive that the Department of Housing and Urban Development (HUD) provides an annual report to Congress on the extent and nature of homelessness.
- The AHAR uses aggregate HMIS data from communities across the country, as well as information from CoC applications, to produce a national report on homelessness to the U.S. Congress. The AHAR is designed to:
 - Develop an estimate of the number of homeless persons nationwide;
 - Estimate the number of persons receiving assistance in permanent supportive housing (PSH)
 - Create a descriptive profile of homeless persons and persons in PSH;
 - Understand service use patterns; and,
 - Estimate the nation’s capacity to house homeless persons.
- The AHAR is based on an unduplicated count of persons within each community, and focuses on persons who use emergency shelters, transitional housing programs and/or permanent supportive housing. The AHAR does not account for homeless persons who only use a supportive service program, or are service resistant and do not access any type of homeless residential program during the study period.
- The AHAR is based largely on the universal data elements in HUD’s HMIS Data and Technical Standards. All HMIS data is reported in the aggregate to the research team. At present, the data represents any person who enters an emergency shelter, transitional housing program and/or permanent supportive housing during a 12-month reporting period, from October 1 to September 30 of the following year.
- Data is reported separately for individuals and persons in families in these program types.
- The AHAR also includes information from annual CoC Exhibit 1 applications. Point-in-Time (PIT) counts of homeless populations offer a “snapshot” of homelessness on a single night in January and include estimates of the unsheltered homeless population. The annual PIT counts also provides information on the numbers of homeless persons within particular subpopulations, such as persons who are chronically homeless, severely mentally ill, substance abusers, veterans, unaccompanied youth, or living with HIV/AIDS.
- Continuums of Care are scored on AHAR participation in the NOFA funding round. Participation in the AHAR.
- Data was used from the following organizations:



Report is broken up into seven different shells for all county and veterans AHAR:



ANNUAL HOMELESS ASSESSMENT REPORT (AHAR) Cont'd

During the 2011/2012 AHAR time period, over 50% of individuals and 47% of families seeking services were housed before entering a program. During this 2011/2012 AHAR time period there was a decrease of 4% for those with a homeless situation prior to entering a program. You will note the increase in the number of permanent supportive housing beds over the past four years. The additional beds became available to the community through the yearly funding round as a result of the continued success of the COC and the score received from HUD. These beds provide a housing opportunity for persons experiencing homelessness in our community. Few persons exited PSH in 2012, for those that did exit approximately 65% were discharged into a positive housing destination (rental by client) thereby ending the homeless episode.

AHAR Counts of People Served by Reporting Category

Reporting Category	2008	2009	2010†	2011	2012
Individuals in Emergency Shelter	909	521	716	551	629
Individuals in Transitional Housing	*	434	399	378	200
Individuals in Permanent Supportive Housing	*	*	338	361	312
Families in Emergency Shelter	394	233	205	99	98
Families in Transitional Housing	176	237	230	249	239
Families in Permanent Supportive Housing	*	*	184	276	283

† First year PSH data included in AHAR. *No data entered for this year or status is not Confirmed and Usable.

AHAR Counts of People Served on an Average Night

Reporting Category	2008	2009	2010†	2011	2012
Individuals in Emergency Shelter	79	34	54	47	99
Individuals in Transitional Housing	*	159	149	107	139
Individuals in Permanent Supportive Housing	*	*	274	295	261
Families in Emergency Shelter	48	23	24	12	7
Families in Transitional Housing	109	125	145	126	146
Families in Permanent Supportive Housing	*	*	156	236	258
Total	236	341	802	823	910

† First year PSH data included in AHAR. *No data entered for this year or status is not Confirmed and Usable.